

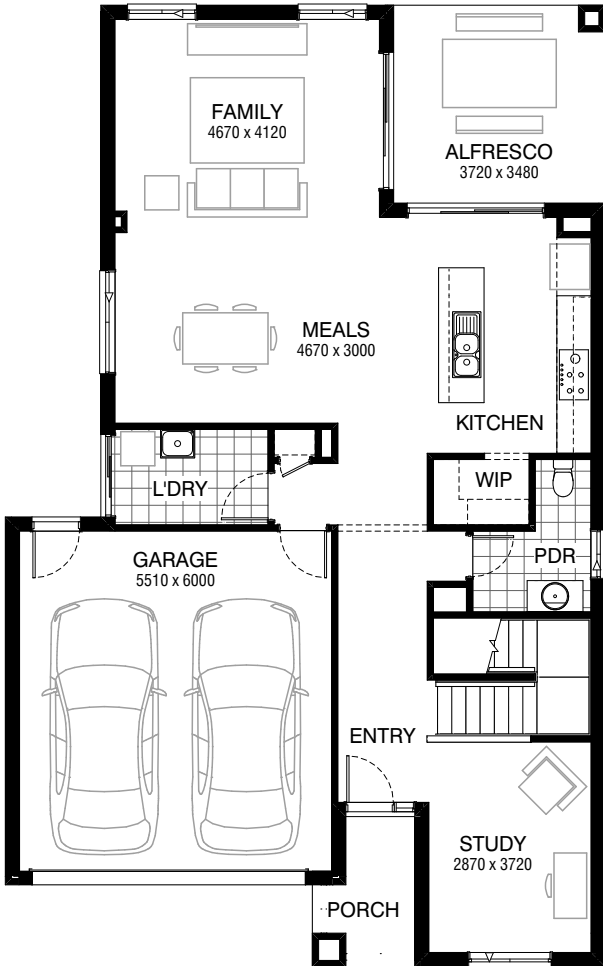
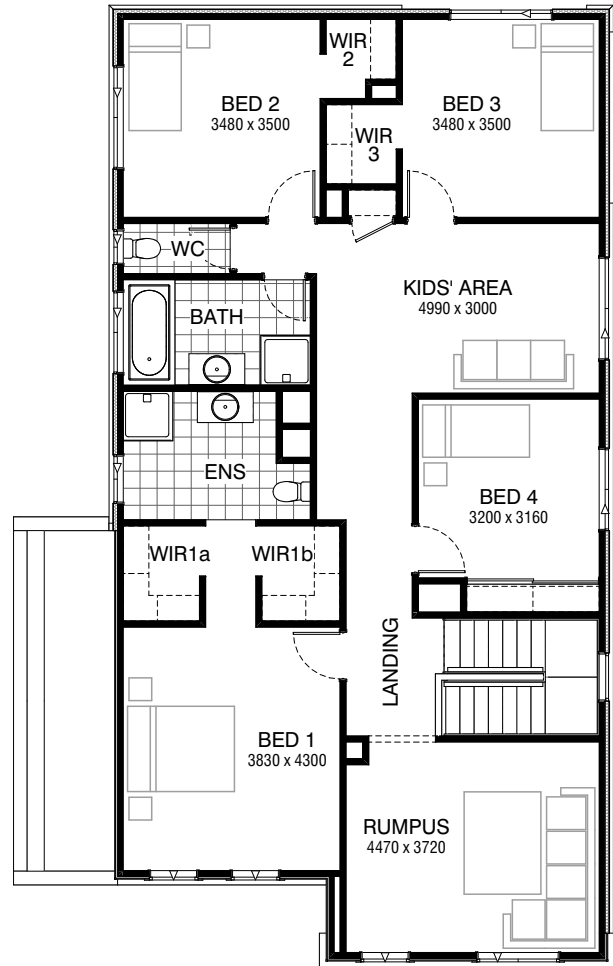


Total squares **31.5sq**

 **4**  **2.5**  **2**



GROUND FLOOR



FIRST FLOOR



FLOORPLAN OPTIONS

All available ready-to-go floorplan options for this design can be viewed on the following pages, or visit www.burbank.com.au.

Facades available:

Condor, Matisse, Monet, Aqua,	
Hester, Metropolitan, Orana,	
Rainforest	
Overall home width	10.55m
Overall home length	16.91m




Residence	139.0m ²	25.7sq
Garage	36.5m ²	3.9sq
Porch	4.0m ²	0.4sq
Alfresco	12.9m ²	1.4sq
Total	292.5m²	31.5sq

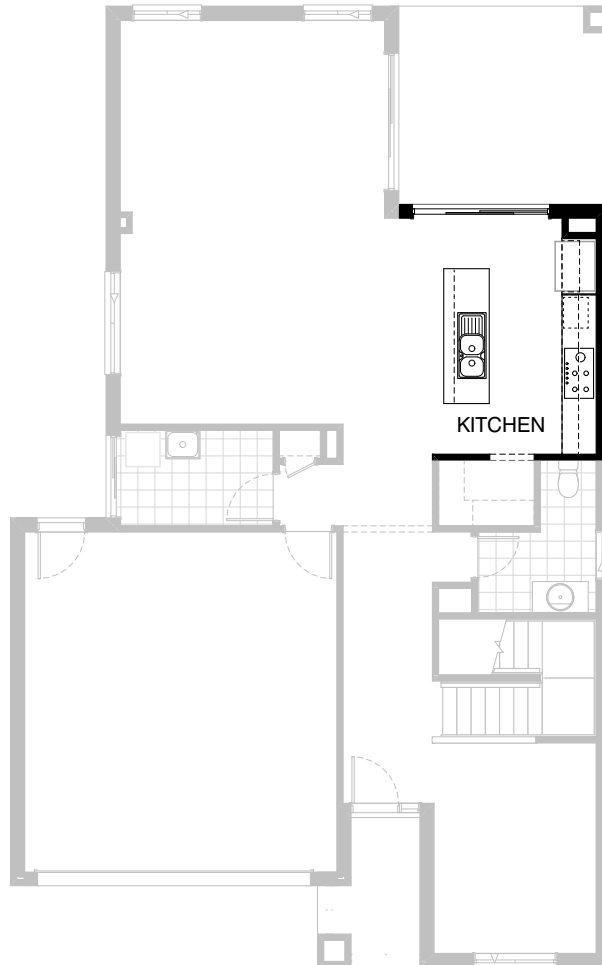
Listed details based on Condor façade floorplan (illustrated)

*Copyright conditions. All photos and illustrations are representative only. Floor plans and specifications may be varied by Burbank without notice, the dimensions are diagrammatic only and a Building Contract with final drawings will display correct dimensions and detail. All designs are the property of Burbank and must not be used, reproduced, copied or varied, wholly or in part without written permission from an authorised Burbank representative. Copyright Burbank Australia Pty Ltd. ABN 91 007 099 872. Builders Registration Number CDB-U-52603.

Call 13 BURBANK
Visit burbank.com.au

FLOORPLAN OPTIONS


 **4**  **2.5**  **2**

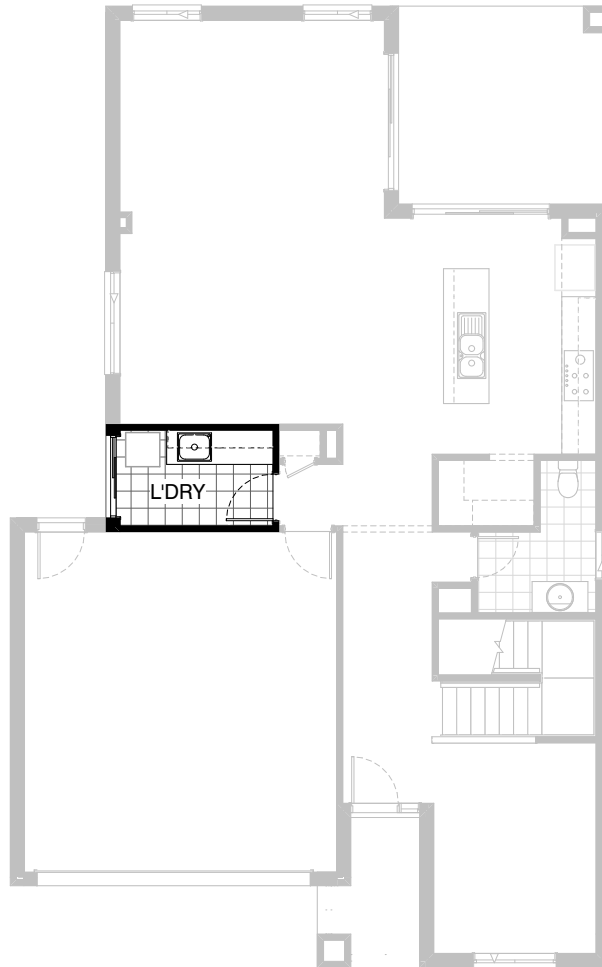


Option K-1

Provide Kitchen Upgrade with laminated open shelf above refrigerator space, 1no. laminated MW. provision, 2no. 300mm base cabinets, 1no. 600mm pot drawers, 2no. 900mm overhead cabinets, 1no. 450mm drawers, 1no. laminated DW. provision, 1no. 800mm base cabinet and 1no. 400mm base cabinet with additional tiled splashback and bench top to suit. Provide 1no. 900mm underbench oven with 900mm gas cooktop & retractable rangehood above.

FLOORPLAN OPTIONS

 **4**  **2.5**  **2**






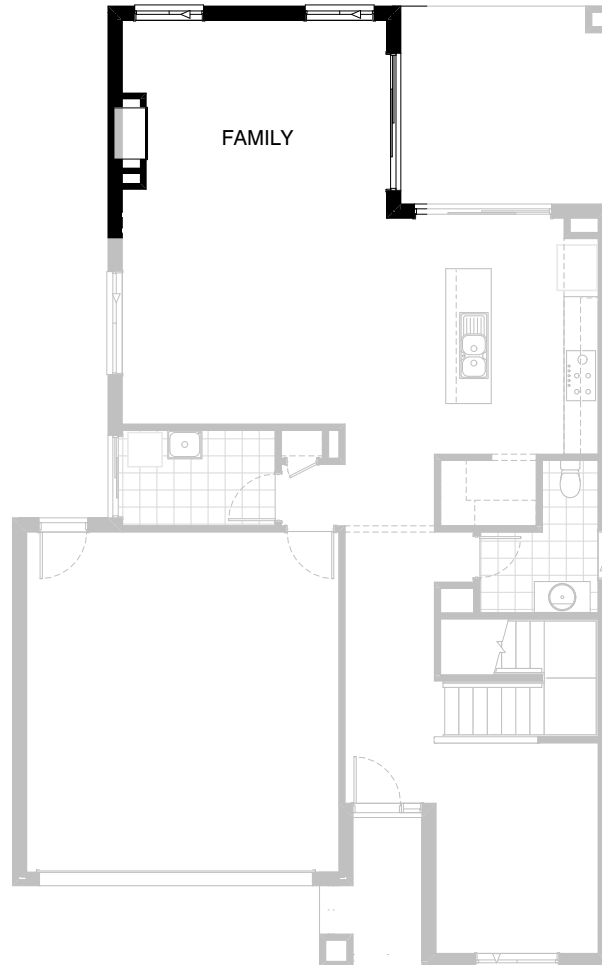
Option LD-1

Provide Laundry Option with additional s.s. inset trough,
2no. 900mm base cabinets, 2no. 900mm overhead
cabinets and additional tiled splashback and bench top to suit.

NOTE: This Option not to be used with Option G-3

FLOORPLAN OPTIONS




 **4**  **2.5**  **2**

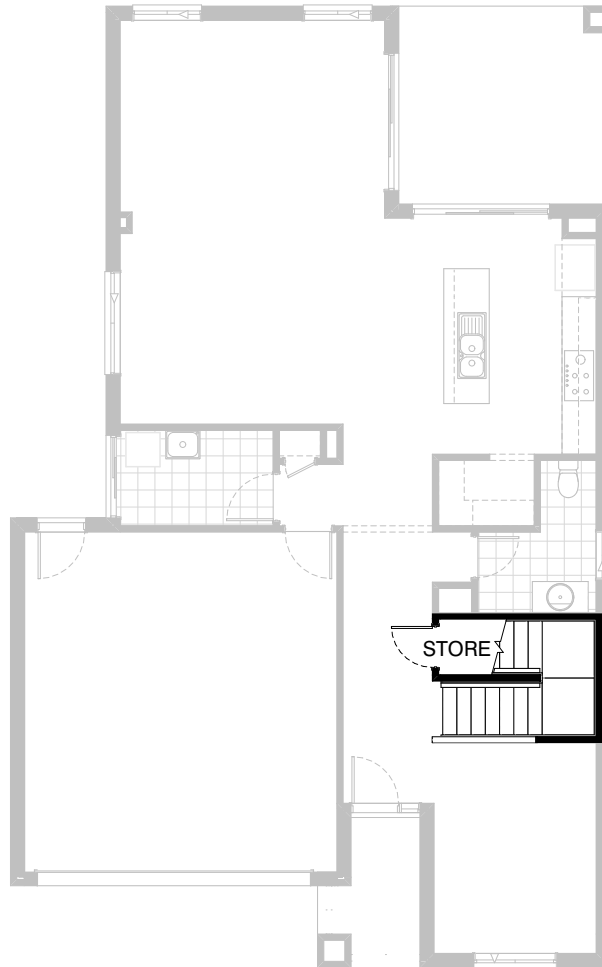


Option IP1-1

Provide Real Flame Inspire 900 gas fireplace 400mm off floor level in a 1400mm x 420mm boxed out plaster all with a 4 sided black fascia to Family room side wall.

FLOORPLAN OPTIONS

 **4**  **2.5**  **2**






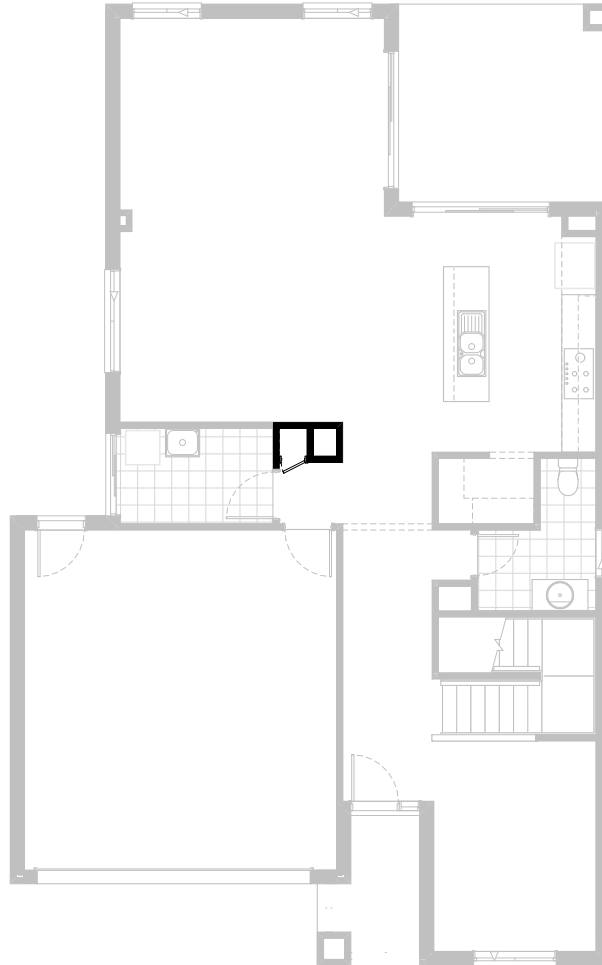
Option IP1-2

Provide Store room below stair including 720mm flush panel hinged door, plaster lined walls and raked plaster ceiling on battens with square set cornice including additional light point.

NOTE: Not available with Options IP1-6, and flooring not included

FLOORPLAN OPTIONS

 **4**  **2.5**  **2**

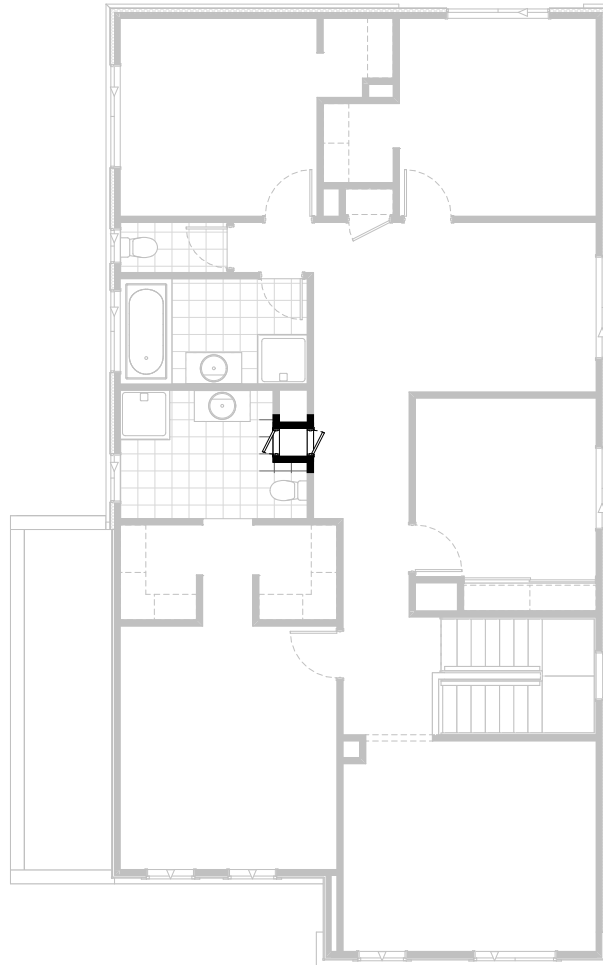


Option IP1-3 GF

Provide Laundry Chute and delete Linen downstairs
with 1no. 520mm flush panel hinged door

FLOORPLAN OPTIONS




 **4**  **2.5**  **2**

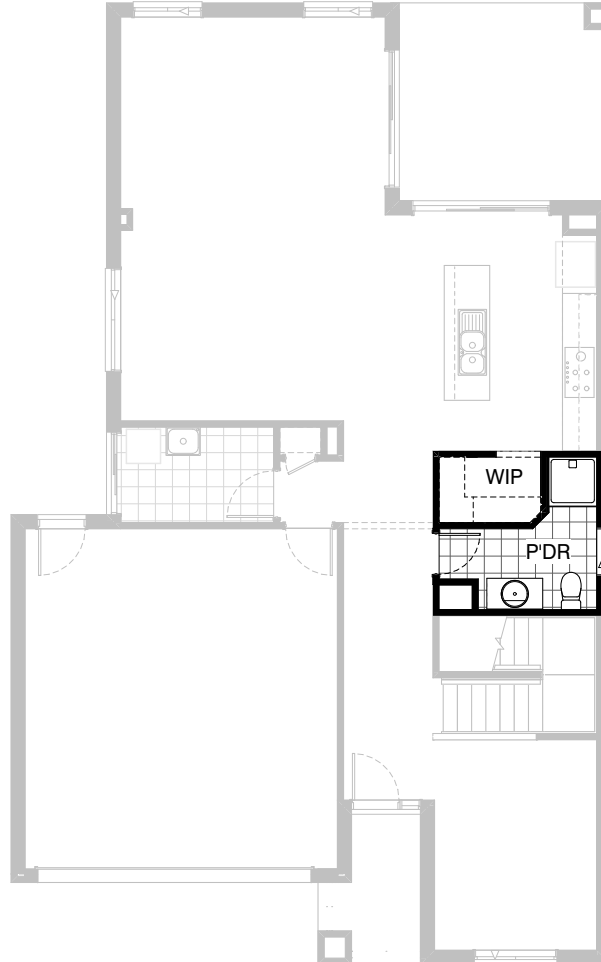


Option IP1-3 FF

Provide Laundry Chute and delete Linen downstairs
with 1no. 520mm flush panel hinged door

FLOORPLAN OPTIONS




 **4**  **2.5**  **2**

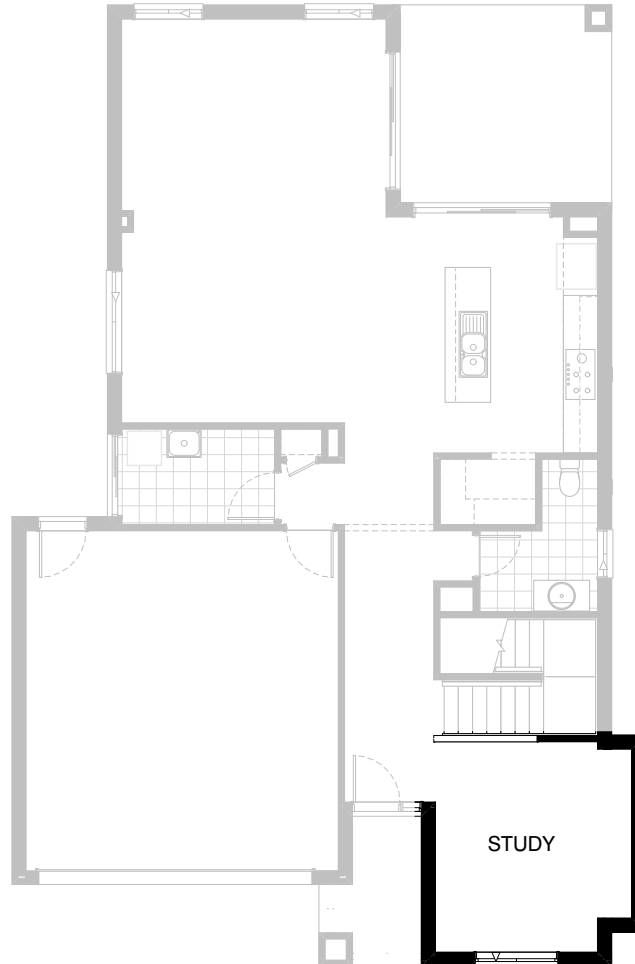


Option IP1-4

Provide Powder upgrade with additional 900mm x 900mm polymer marble shower base, relocate hinged door, toilet and vanity basin to suit and increase WIP by 100mm and angle stud wall to suit.

FLOORPLAN OPTIONS




 **4**  **2.5**  **2**



Option IP1-5

Provide Study Option by extending Study wall
width by 600mm with brick parapet flat roof above.
Increases area by 2.08m².
Increases width by 600mm.

FLOORPLAN OPTIONS

 **4**  **2.5**  **2**






Option IP1-6

Provide Kitchen upgrade including relocate RA to current Linen location, Powder room and W.I.P redesign and provide WIL. Provide 720mm flush panel door to W.I.L in lieu of 520mm to Linen and additional 4no. 300mm deep shelving and 4no. 450mm deep shelving to suit, provide Alcove beneath stair for new vanity location and provide 782mm vanity unit in lieu of 982mm and 1027mm x 850mm aluminium sliding window in lieu of 1800mm x 850mm to Powder room. Provide 2no. 300mm deep bulkheads to Kitchen and Butlers and 2x additional 514mm x 1450mm aluminium fixed windows to splashback. Provide 2No. 450mm base cabinets, 1no. 400mm base cabinet, 1no. 600mm base cabinet, 4no. 900mm base cabinets, 1no. 450mm drawer unit, 1No. DW. provision, 1No. open shelf above fridge space with 16mm laminated end panel, 1no. wall oven tower with pot drawers below and MW. provision and cabinets above, 1no. 600mm wall oven, 900mm gas cooktop with retractable rangehood above, 1200mm deep benchtop to island bench, 2No. 450mm overhead cabinet, 1no. 400mm overhead cabinet, 1no. 600mm overhead cabinet and 2no. 900mm overhead cabinets. Provide additional single bowl sink to Butlers Pantry including additional tiled splashback and bench top to suit, add 240mm wide bulkhead to passage and relocate R/A provision to Linen cupboard space.

NOTE: Not available with Options IP1-2, & IP1-3

FLOORPLAN OPTIONS




 **4**  **2.5**  **2**

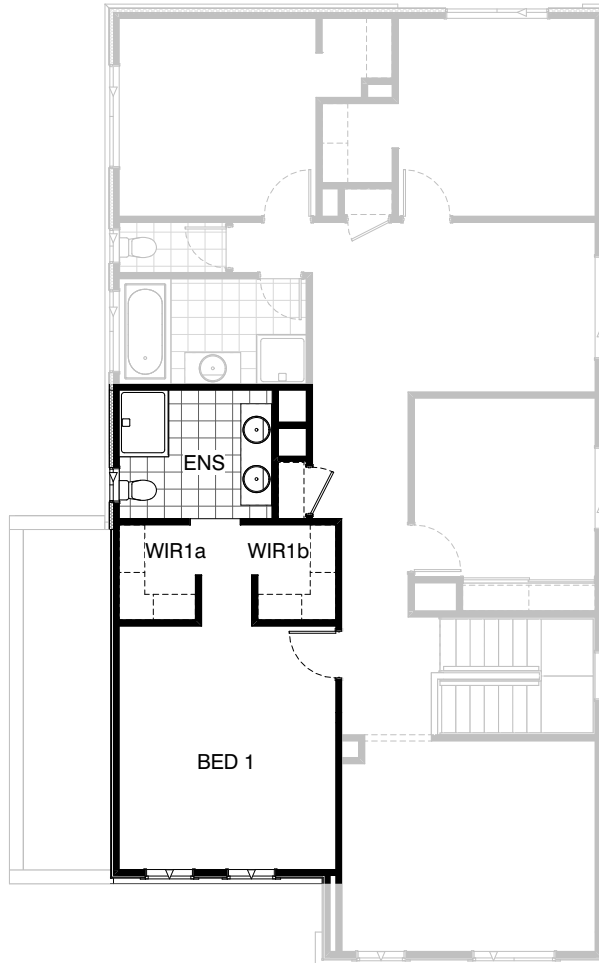


Option ENS-1

Provide Ensuite upgrade with additional site built plaster lined walls to WC with 1no. 720mm flush panel hinged door, 1200mm x 900mm poly marble shower base, 1782mm wide vanity unit in lieu of standard. Decrease Bed 1 by 300mm to 4000mm x 3810mm, decrease W.I.R 1a/b by 90mm and increase Ensuite / WC by 390mm to suit.

FLOORPLAN OPTIONS




 **4**  **2.5**  **2**

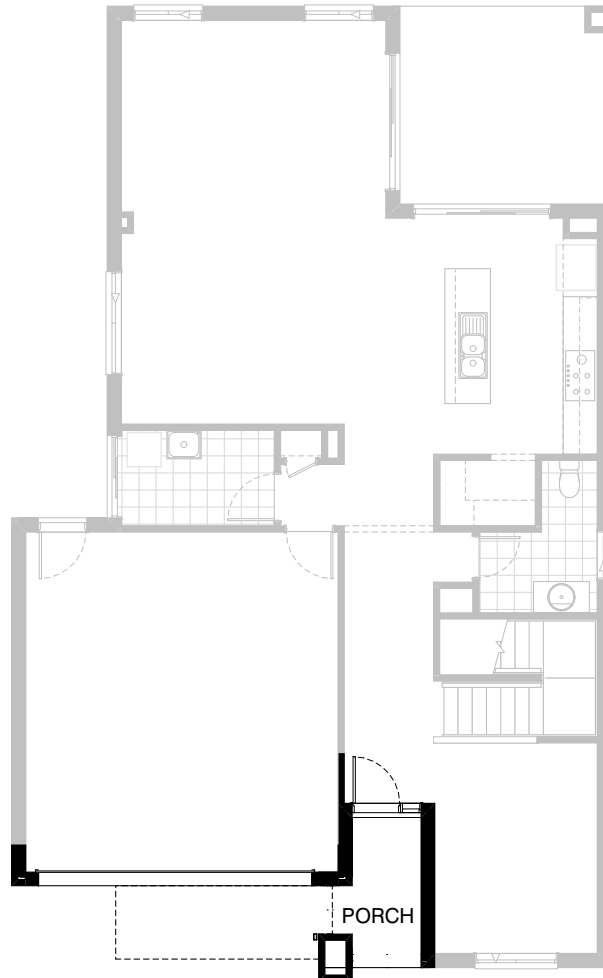


Option ENS-2

Provide Ensuite option with 1no. 1200 x 900mm polymarble shower base in lieu of standard, 1no. 1782mm wide vanity with 2no. basins in lieu of standard and 1no. 1027mm x 610mm aluminium sliding window in lieu of standard. Provide additional 1no. Linen cupboard with 1no. 820mm flush panel hinged door to suit and relocate Ensuite opening and adjust W.I.R 1a/b to suit.

FLOORPLAN OPTIONS

 **4**  **2.5**  **2**






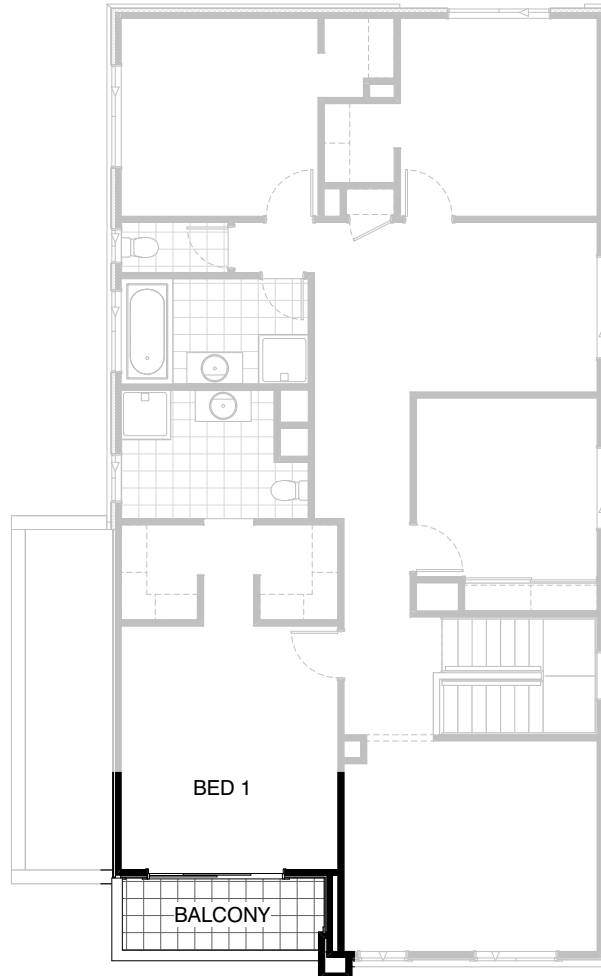
Option BA-1 GF

Provide Balcony Option to Bed 1 including ceramic tiled floor, timber framed wall balustrade with 'Scyon Stria' cladding. Replace existing Bed 1 window with 2100mm x 2410mm aluminium single glazed sliding door & increase height of porch pier to underside of eaves.

NOTE - This option applies to the Condor facade only.

FLOORPLAN OPTIONS

 **4**  **2.5**  **2**






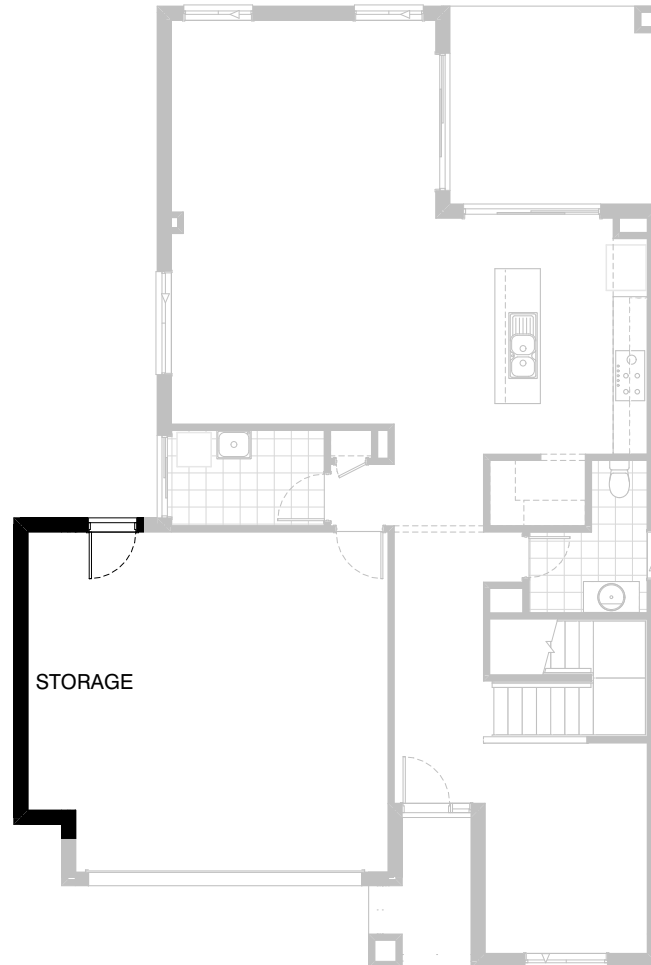
Option BA-1 FF

Provide Balcony Option to Bed 1 including ceramic tiled floor, timber framed wall balustrade with 'Scyon Stria' cladding. Replace existing Bed 1 window with 2100mm x 2410mm aluminium single glazed sliding door & increase height of porch pier to underside of eaves.

NOTE - This option applies to the Condor facade only.

FLOORPLAN OPTIONS




 **4**  **2.5**  **2**

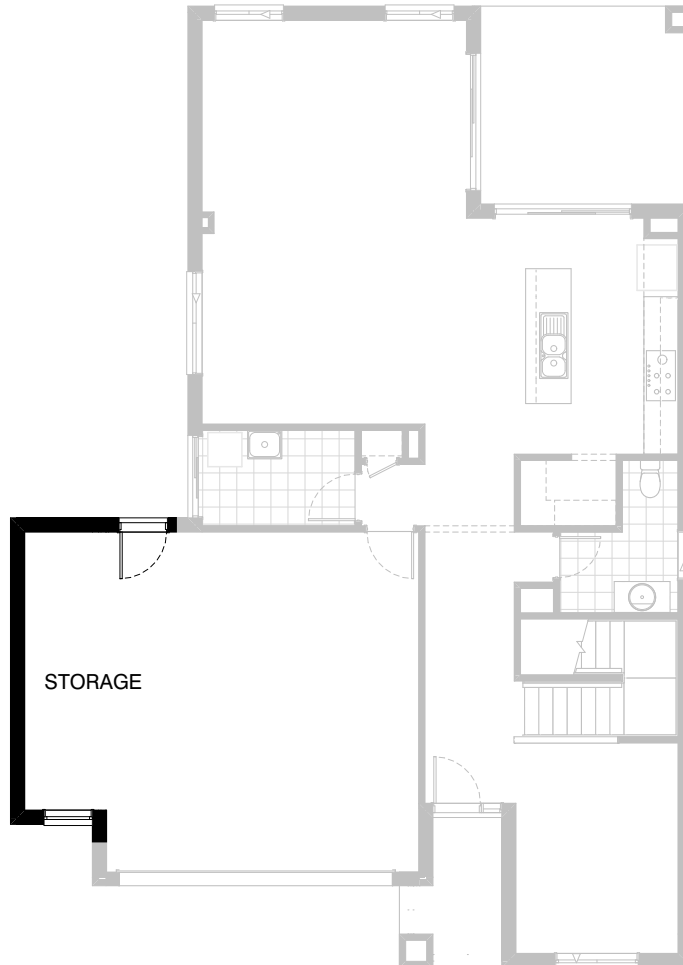


Option G-1

Provide extension to Garage to create additional Storage area.
Increases area by 4.52m².
Increases width by 840mm.

FLOORPLAN OPTIONS




 **4**  **2.5**  **2**

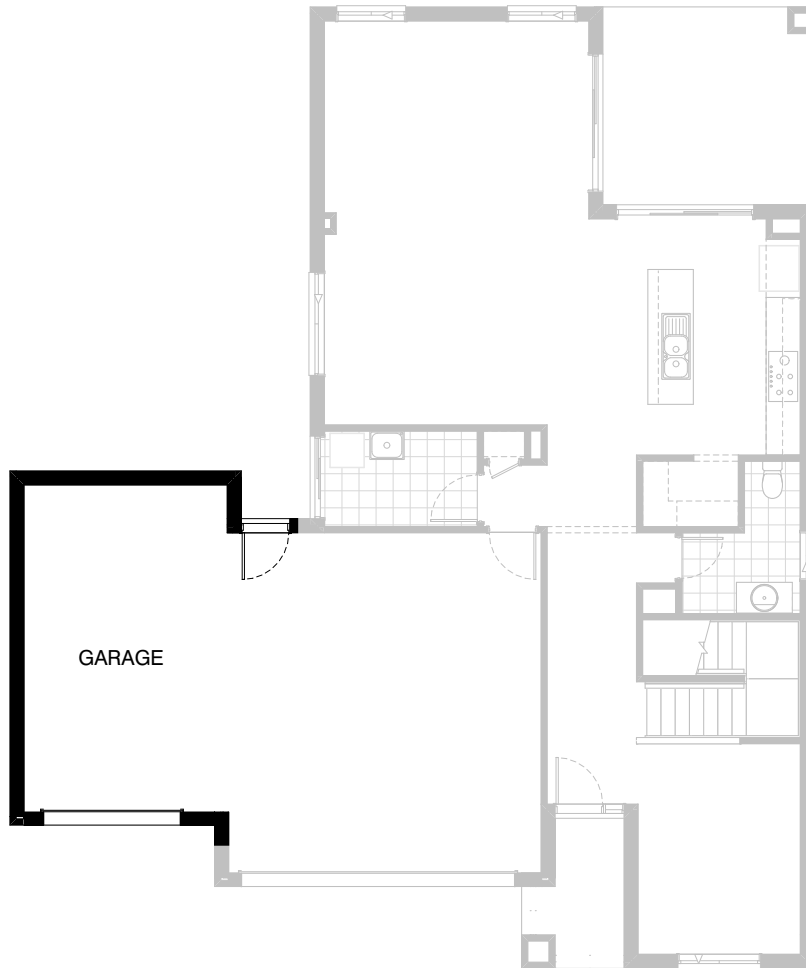


Option G-2

Provide extension to Garage to create
Storage area including
2057mm x 850mm aluminium
feature awning window.
Increases area by 7.76m².
Increases width by 1440mm.

FLOORPLAN OPTIONS

 **4**  **2.5**  **2**



Option G-3

Provide triple car garage including additional garage door as per colour selection.
Increases area by 22.82m².
Increases width by 3600mm.